



SMI SPRING 2025 FORUM
A NEW ERA
IN
HEALTHCARE SUPPLY CHAIN:

ADAPTING TO CHANGE, ADVANCING WITH PURPOSE

JUNE 3-5

**THE WESTIN DALLAS
STONEBRIAR RESORT
FRISCO, TX**



SMI SPRING 2025 FORUM

A NEW ERA IN HEALTHCARE SUPPLY CHAIN:

ADAPTING TO CHANGE, ADVANCING WITH PURPOSE

TUESDAY, JUNE 3

3:00 PM - 4:30 PM CT

REGISTRATION OPENS

5:30 PM CT

NEW MEMBER/1ST TIMER RECEPTION (BY INVITATION ONLY)

4:30 PM - 5:30 PM CT

AWL MENTEE RECEPTION
(AWL MENTEES BY INVITATION ONLY)

5:30 PM - 7:30 PM CT

WELCOME RECEPTION

Begin the Forum with exceptional networking, reconnecting with old friends and engaging with new peers.

WEDNESDAY, JUNE 4

7:00 AM - 7:50 AM CT

BREAKFAST & NETWORKING

8:00 AM - 8:15 AM CT

GENERAL SESSION
WELCOME



LISA HOHMAN

SVP, CHIEF EXPENSE OFFICER, CHIEF
SUSTAINABILITY OFFICER



JANE PLEASANTS

PRESIDENT



MATT MENTEL

STRATEGIC PARTNER



Your Host for the Forum



SMI SPRING 2025 FORUM

A NEW ERA IN HEALTHCARE SUPPLY CHAIN:

ADAPTING TO CHANGE, ADVANCING WITH PURPOSE

8:15 AM - 9:30 AM CT

OPENING KEYNOTE

FILTERING THE NOISE: FINDING CLARITY IN CHAOS



Submit your questions and topics for Ford directly on your registration form!

Ford Koles will present the state of the state for healthcare supply chain, the latest from Washington, what healthcare leaders need to know for 2025 and how to bring clarity to your organization.



FORD KOLES

VICE PRESIDENT | NATIONAL SPOKESPERSON, THE
ADVISORY BOARD



KEY TOPICS

- Tariffs, Onshoring, Cost Containment
- Remaking Cost Structures over the next 10 years
- Executive Orders Including Medicare & Medicaid
- Historical Trends on Industry Shifts
- Big Data & AI

9:30 AM - 9:45 AM CT

TABLE TALK

Reflect on Ford's presentation and explore ways to maximize his insights.

9:45 AM - 10:15 AM CT

NETWORKING BREAK

10:15 AM - 11:45 AM CT

HOT TOPICS SPEED NETWORKING



Facilitated by SMI Board members and led by industry leaders Matt Mentel and Joe Walsh, we will tackle the tough topics top of mind for members. Don't miss this unique opportunity to engage with the SMI member community, forge new connections, and delve into today's most important issues.



SMI SPRING 2025 FORUM

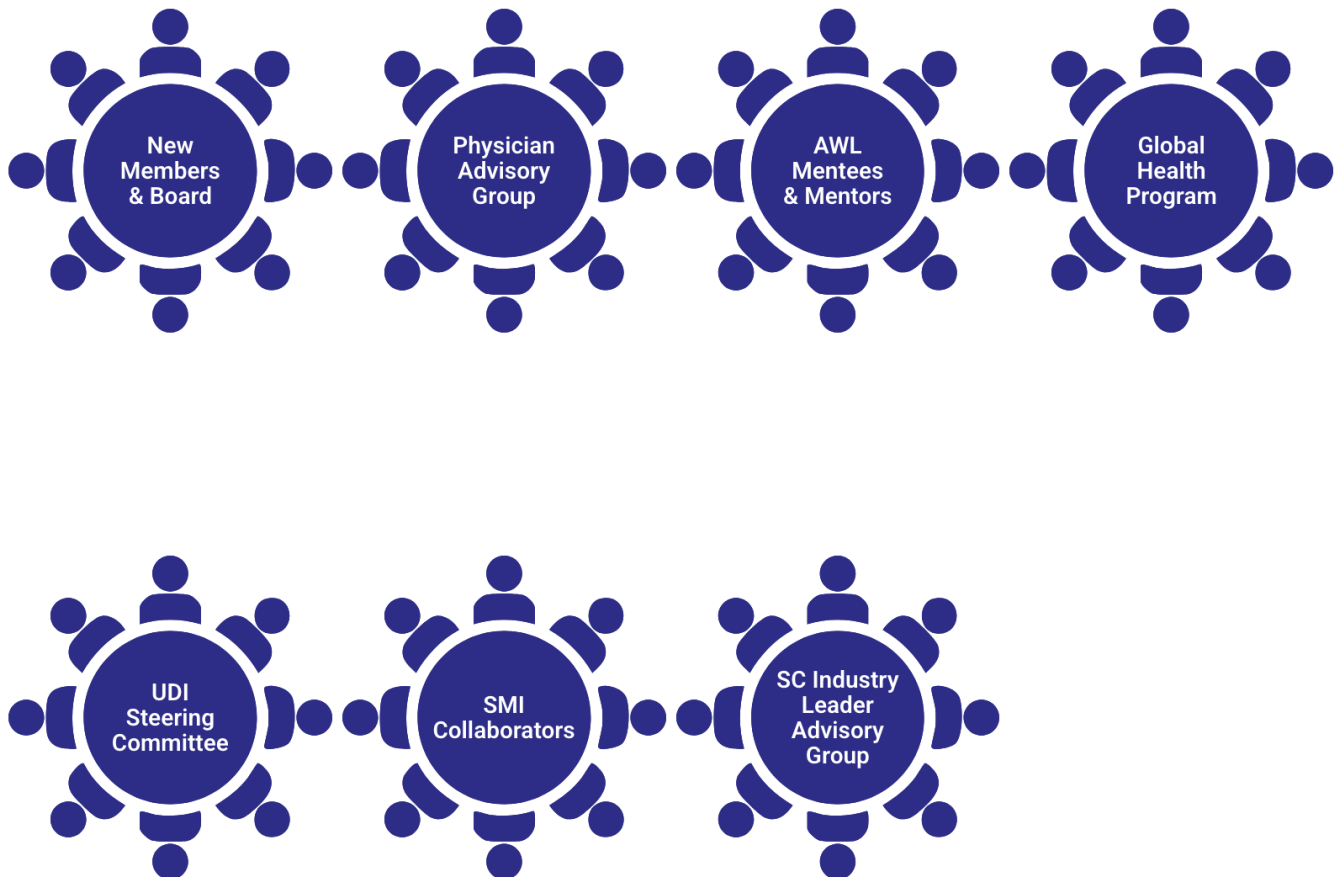
A NEW ERA IN HEALTHCARE SUPPLY CHAIN:

ADAPTING TO CHANGE, ADVANCING WITH PURPOSE

11:45 AM - 1:00 PM CT

LUNCH & NETWORKING (INCLUDING DESIGNATED TABLES FOR CERTAIN AFFINITY GROUPS)

>>There will be a few pre-assigned tables for certain groups to connect during lunch (see name badges)





SMI SPRING 2025 FORUM A NEW ERA IN HEALTHCARE SUPPLY CHAIN:

ADAPTING TO CHANGE, ADVANCING WITH PURPOSE

1:00 PM - 1:30 PM CT

SMI PROGRAMS UPDATE & AWARDS

10 Year Anniversary

1:30 PM - 2:30 PM CT

DECODING EXECUTIVE ORDERS: HOW PROVIDERS & SUPPLIERS ARE NAVIGATING WHAT'S NEXT

Tariffs, Medicare, Medicaid, NIH Funding

This innovative panel will build on the presentation by Ford Koles and discuss what we need to do next to deal with the most pressing challenges in healthcare. They will look beyond just supply chain and discuss what we need to be ready for. Expect a thought-provoking discussion that pushes boundaries and delivers actionable solutions.



MATT ROWAN

PRESIDENT & CEO



PAUL SELTMAN

VICE PRESIDENT, GLOBAL
PUBLIC POLICY &
GOVERNMENT AFFAIRS



BETTY JO ROCCHIO

EXECUTIVE VICE PRESIDENT
AND CHIEF NURSE
EXECUTIVE



MODERATOR:
MATT MENDEL

STRATEGIC PARTNER



2:30 PM - 3:00 PM CT

NETWORKING BREAK

3:00 PM - 5:00 PM CT

THOUGHT LEADERSHIP COUNCIL MEETINGS WITH CO-CHAIRS



SMI SPRING 2025 FORUM
**A NEW ERA
IN
HEALTHCARE SUPPLY CHAIN:**

ADAPTING TO CHANGE, ADVANCING WITH PURPOSE



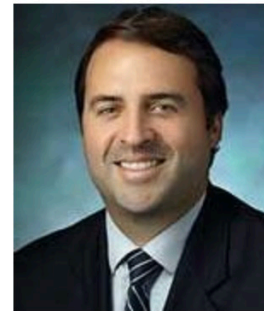
CLINICAL INTEGRATION

The Clinical Integration Council works to lead the industry to an effective and sustainable integration relationship between the supply chain, clinical teams, and physician supply chain leaders.



**AARATHI CHOLKERI-SINGH, MD,
FACOG**

EXECUTIVE DIRECTOR & CHIEF MEDICAL
OFFICER



BURTON FULLER

VICE PRESIDENT AND CHIEF SUPPLY
CHAIN OFFICER



DIVERSITY & INCLUSION

The Diversity & Inclusion Council works to identify and promote effective strategies that foster a culture of access and belonging within our Supply Chains to positively impact the communities we serve.



**VALENCIA
STOUDAMIRE, MPA**

VICE PRESIDENT,
SUPPLIER DIVERSITY



DARYL STILLEY

VICE PRESIDENT, GPO STRATEGY
HEALTHCARE & SENIORS





SMI SPRING 2025 FORUM
**A NEW ERA
IN
HEALTHCARE SUPPLY CHAIN:**

ADAPTING TO CHANGE, ADVANCING WITH PURPOSE



**INTELLIGENT
SUPPLY CHAIN**

The Intelligent Supply Chain Council works to accelerate the creation and adoption of best practices that enhance efficiency, optimize workflows, and create tangible lasting value across the industry in serving our patients, community, and constituents.



AMANDA CHAWLA

CHIEF SUPPLY
CHAIN OFFICER



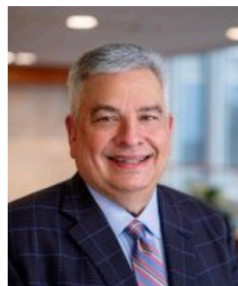
MARY LEONHARDT

DIRECTOR, INTEGRATED
DELIVERY NETWORKS



**KEY STRATEGIC
COLLABORATION**

The Key Strategic Collaboration Council works to build upon and expand SMI'S commitment to leading and modeling collaborative relationships between trading partners.



JIM FRANCIS

DIVISION CHAIR, SUPPLY CHAIN
MANAGEMENT AND ASSISTANT
TREASURER



MATT BRANDT

CEO & FOUNDER





SMI SPRING 2025 FORUM A NEW ERA IN HEALTHCARE SUPPLY CHAIN:

ADAPTING TO CHANGE, ADVANCING WITH PURPOSE

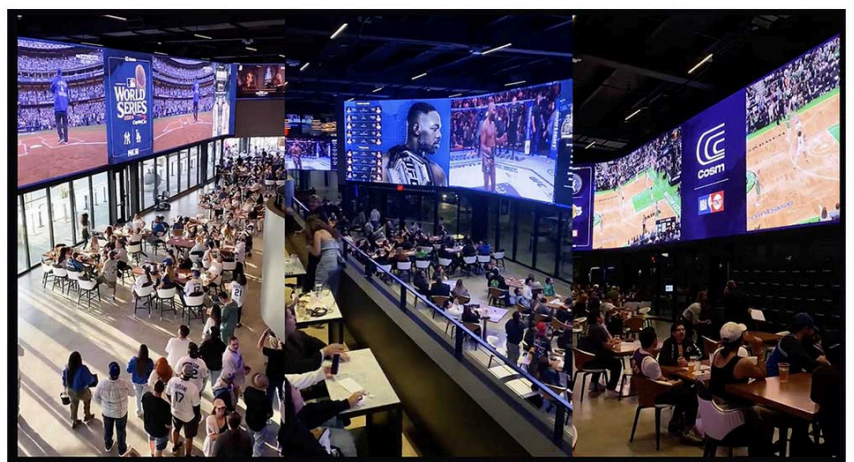
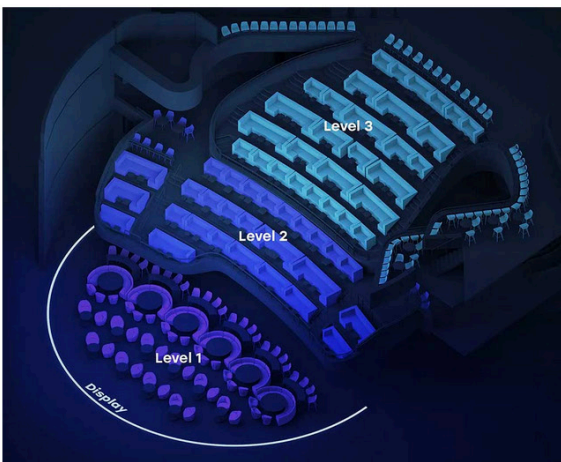
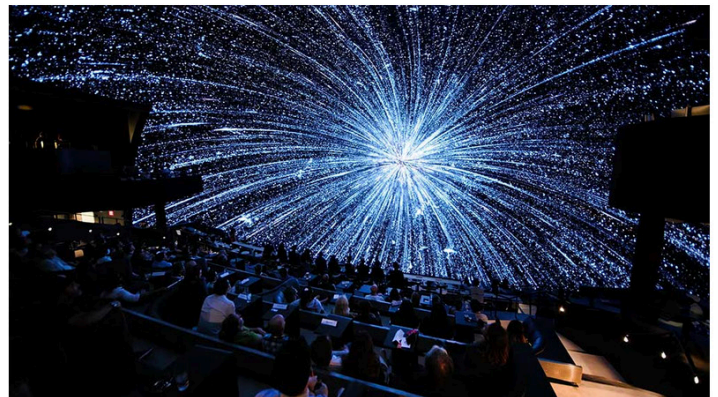
6:15 PM CT

**BUSES BEGIN DEPARTING FOR OFF-SITE
EVENING DINNER EVENT**

6:30 PM - 9:30 PM CT

**SMI'S EVENING DINNER EVENT
EXPERIENCE COSM**

Step into the future of live events at The Dome, where Cosm's groundbreaking curved LED technology creates a one-of-a-kind immersive experience. Enjoy this dynamic virtual reality setting while networking and connecting with new people. The event will take place both inside Cosm and outside on the patio overlooking the city, along with music!





SMI SPRING 2025 FORUM
**A NEW ERA
IN
HEALTHCARE SUPPLY CHAIN:**

ADAPTING TO CHANGE, ADVANCING WITH PURPOSE

THURSDAY, JUNE 5

7:00 AM - 8:15 AM CT

BREAKFAST/LUGGAGE STORAGE

8:30 AM - 9:30 AM CT

SMI2U WORKSHOPS: MEMBER TO MEMBER STORIES

WORKSHOP #1

TOPIC: SUPPLY CHAIN CHALLENGES

Tariffs, Disasters, and Backorders: Trading Partners Tackling Turbulent Times Together

- Navigating product availability, recalls, back-orders, and stockouts
- Managing costs for a more efficient supply chain
- Strategies for running an effective and resilient supply chain
- Educating clinicians on supply chain challenges and best practices
- How Industry Partners Play a Role in the Solution Not the Problem



**MODERATOR:
CHRISTINE ARME**

CHIEF COMMERCIAL
OFFICER



ALAN MAVIS

SENIOR DIRECTOR,
NATIONAL ACCOUNTS



JAY KIRKPATRICK

VICE PRESIDENT, SUPPLY
CHAIN OPERATIONS



STEVE MASON

CEO, GLOBAL MEDICAL
PRODUCTS & DISTRIBUTION



STEVE CHYUNG

SENIOR VICE PRESIDENT,
CHIEF SUPPLY CHAIN AND
PROCUREMENT OFFICER





SMI SPRING 2025 FORUM A NEW ERA IN HEALTHCARE SUPPLY CHAIN:

ADAPTING TO CHANGE, ADVANCING WITH PURPOSE

WORKSHOP #2 TOPIC: INNOVATION

PART 1 (Spring Forum): Creating a Culture of Innovation

PART 2 (Fall Forum): Applying these Principles to Optimize Your Supply Chain

- Breaking down the barriers to innovation
- Real-world example: How Amazon thinks, acts, and plans around innovation
- Interactive discussion on challenges in healthcare supply chain innovation
- Strategies for suppliers and providers to collaborate on innovation



JOE WALSH

EXECUTIVE COACH &
EDUCATOR



SANDHYA DHIR

HEAD OF HEALTHCARE
STRATEGY &
DEVELOPMENT



BILL KOPITKE

GENERAL MANAGER AND
HEAD OF HEALTHCARE





SMI SPRING 2025 FORUM

A NEW ERA IN HEALTHCARE SUPPLY CHAIN:

ADAPTING TO CHANGE, ADVANCING WITH PURPOSE

WORKSHOP #3

TOPIC: DATA & AI

How does AI and Improved Data Science Fit into the Healthcare Supply Chain of the Future?

- Discussion on the state of AI and data science advances in the healthcare supply chain
- What practical use cases are for this rapidly evolving space
- How can providers, manufacturers, distributors and service businesses respond
- Come prepared to help bring some common understanding to these terms, how to start and what the destination should look like for the healthcare industry



MODERATOR: ERIC
O'DAFFER

INDUSTRY LEADER



CODY FISHER

PRESIDENT, CONCORDANCE
INNOVATIONS



SNEHASHISH
SARKAR

EVP, CHIEF INFORMATION
OFFICER



BRADD BUSICK

SENIOR VICE PRESIDENT
AND CHIEF INFORMATION
OFFICER





SMI SPRING 2025 FORUM

A NEW ERA IN HEALTHCARE SUPPLY CHAIN:

ADAPTING TO CHANGE, ADVANCING WITH PURPOSE

WORKSHOP #4

TOPIC: LEADERSHIP

The Leadership Capabilities Needed for a Dynamic, Chaotic, Ever Changing Landscape

- The impacts of the environment on leadership (disruption is here to stay, how do we navigate it?)
- Unpacking and leveraging the BANI model (Brittle, Anxious, Non Linear and Incomprehensible) taking over VUCA
- The leadership capabilities that are in short supply and high demand
- How to develop the necessary leadership capabilities and set yourself apart
- The team dynamics needed to executive on your business



AUDREY MCGUCKIN

CEO



DONNA DRUMMOND

SENIOR VICE PRESIDENT,
CONSOLIDATED SERVICES



DOUG GOLWAS

CHIEF COMMERCIAL
OFFICER





SMI SPRING 2025 FORUM
**A NEW ERA
IN
HEALTHCARE SUPPLY CHAIN:**

ADAPTING TO CHANGE, ADVANCING WITH PURPOSE

WORKSHOP #5
TOPIC: INDIRECT SPEND

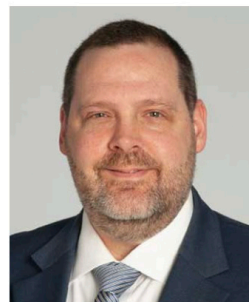
Building a Better Mouse Trap: A Game-Changing Approach to Indirect Spend Management

- Examine the impact of indirect/non-clinical spending on an organization's finances, staffing models, and overall performance
- Dive into best practices that enhance operational efficiency, improve supplier relationships, leverage enhanced benchmarks and reduce organizational risk
- Learn how leading organizations from both inside and outside of healthcare are tackling this complex and often overlooked spending that typically consumes 20%+ of total annual revenue



MODERATOR:
MARK VAN SUMEREN

STRATEGIC ADVISOR



JOHN DOCKINS

EXECUTIVE DIRECTOR,
SOURCING & VENDOR
MANAGEMENT



GARET GUTHRIE

EXECUTIVE VICE PRESIDENT,
CHIEF FINANCIAL OFFICER





SMI SPRING 2025 FORUM A NEW ERA IN HEALTHCARE SUPPLY CHAIN:

ADAPTING TO CHANGE, ADVANCING WITH PURPOSE

9:30 AM - 10:00 PM CT

NETWORKING BREAK

10:00 AM - 11:00 AM CT



Discover innovative solutions developed by SMI Members to propel your organization forward. Explore the latest tools, bring back actionable insights, and share them with your team and leadership—positioning yourself as a catalyst for change.

11:00 AM - 12:00 PM CT



Where Ideas Ignite

INDUSTRY INNOVATIONS AND ACTIONS: 10 MINUTE FUTURE FORWARD TED TALKS

Don't miss this new, engaging and fast-paced session where we dive into key topics shaping the future. Each topic will be presented in a dynamic **TED Talk-style format**, delivering impactful insights in just 10 minutes with 5 minutes of discussion. Hear from Industry Titans:



JIM FRANCIS

CHAIR, SUPPLY CHAIN
MANAGEMENT &
ASSISTANT TREASURER



RÉGINE VILLAIN

SENIOR VP OF SUPPLY
CHAIN NETWORK & CHIEF
SUPPLY CHAIN OFFICER



MOLLY MATTHEWS

CHIEF EXECUTIVE OFFICER



CHRISTINE ARME

CHIEF COMMERCIAL
OFFICER





SMI SPRING 2025 FORUM

A NEW ERA IN HEALTHCARE SUPPLY CHAIN:

ADAPTING TO CHANGE, ADVANCING WITH PURPOSE

Beyond the presentations, this session offers a unique opportunity to connect with peers, exchange perspectives, and discuss actionable next steps. Gain fresh ideas, spark meaningful conversations, and leave with new strategies to drive innovation within your organization.

12:00 PM - 12:15 PM CT

FORUM ADJOURNMENT

Board Chair, Lisa Hohman, CEO of Concordance
Forum Host, Matt Mentel, Strategic Partner